

GEISTER



The better way to operate™

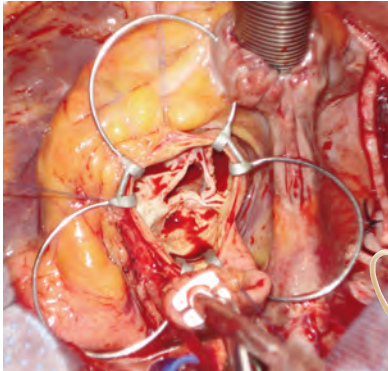
Performance needs space ...

Izzat Spring Retractor



Optimal performance of aortic valve repair or replacement requires:

- 1 - Full exposure of the aortic root.
- 2 - Symmetrical retraction of all aortic sinuses to avoid distortion of the aortic root.
- 3 - Stability of retraction throughout the procedure



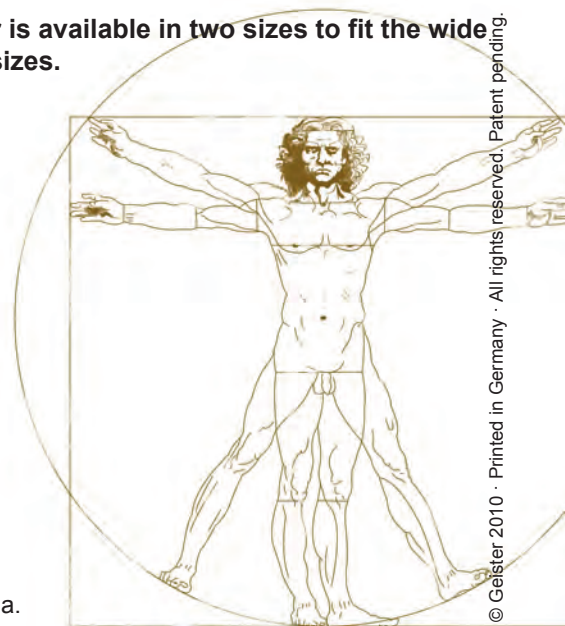
The Izzat Spring Retractor\* is designed to achieve all three goals. Three specifically designed blades are joined together to achieve 360 degrees radial retraction. The inter-connecting springs apply equal tension to all three sinuses and ensures maintenance of the natural shape of the aortic root.

Order information:

- 30-1050 Izzat Spring Retractor large 8,5cm 10mm
- 30-1051 Izzat Spring Retractor small 8,5cm 6mm
- 30-1055 Izzat Spring Retractor Applicator 20cm

The self-retaining design of the Spring Retractor ensures its stability throughout the procedure, and avoids the need for its repositioning during surgery.

The Spring Retractor is available in two sizes to fit the wide range of aortic root sizes.



\* Developed in cooperation with Professor M. Bashar Izzat, FRCS(CTh), Damascus, Syria.